



*jordan fishwick*

3 Carpenters Court, South Street, SK9 7ES  
Guide Price £294,950



# Carpenters Court Alderley Edge

Guide Price £294,950



Located within a central Alderley Edge location this well presented and spacious first floor apartment is situated within the heart of Alderley Edge village. Alderley Edge offers a wide variety of excellent local amenities. The apartment consists of a communal internal entrance hallway with staircase leading to all floors. This first floor apartment comprises of an internal entrance hallway, large open plan and highly sociable space featuring a kitchen, dining area and living room. Oak flooring is fitted throughout this space with the kitchen being fitted with stylish and modern kitchen units complemented with range of integrated kitchen appliances and a breakfast bar. There is ample space for a dining table and chair set, living room furniture and a feature bay window overlooking the front aspect with fitted plantation shutters creating privacy and character. The principal bedroom is worthy of note being spacious and overlooks the rear of the development. Bedroom two features a fitted wardrobe whilst the bathroom has been re-fitted with a stylish and modern white bathroom suite and contemporary tiled splash backs. The property is double glazed and gas central heated and benefits from parking in the resident's car park.







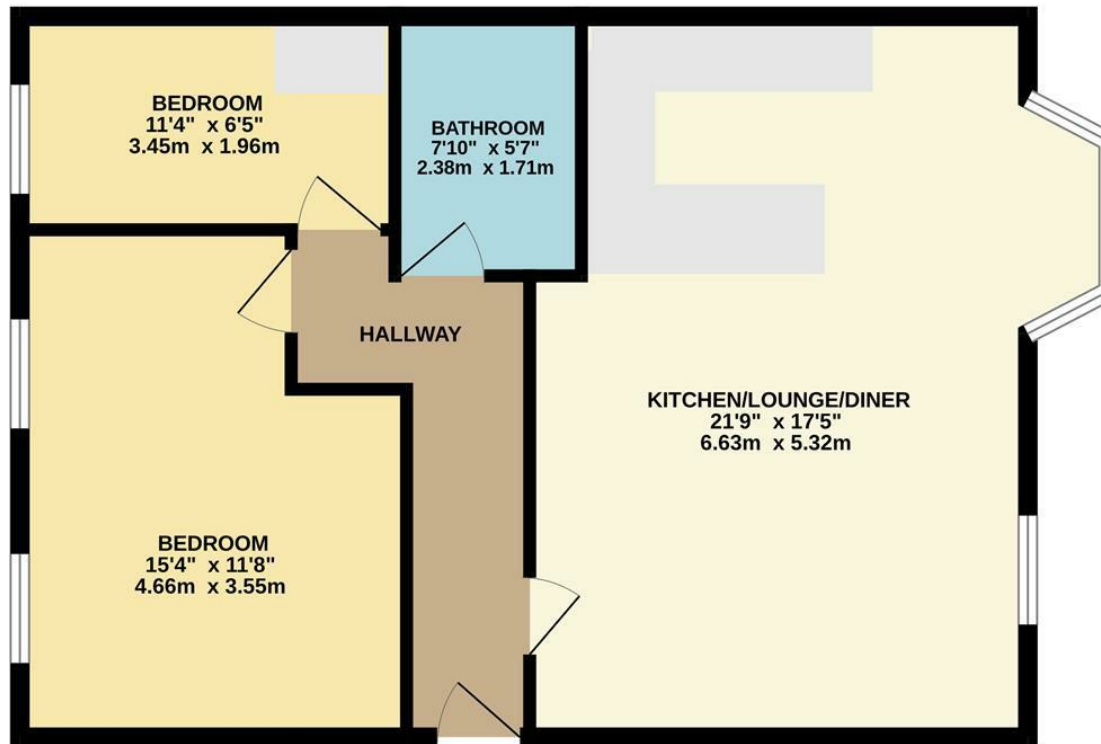
- Purpose Built Apartment
- Two Bedrooms
- First Floor
- Residents Car park
- Central Alderley Edge Location
- Stunning Bathroom
- Open plan living
- Gas central Heated
- Beautifully Decorated



Energy Efficiency Rating		
	Current	Potential
Very energy efficient - lower running costs		
(92 plus) <b>A</b>		
(81-91) <b>B</b>		
(69-80) <b>C</b>	72	79
(55-68) <b>D</b>		
(39-54) <b>E</b>		
(21-38) <b>F</b>		
(1-20) <b>G</b>		
Not energy efficient - higher running costs		
<b>England &amp; Wales</b>	EU Directive 2002/91/EC	



GROUND FLOOR  
674 sq.ft. (62.7 sq.m.) approx.



TOTAL FLOOR AREA: 674 sq.ft. (62.7 sq.m.) approx.  
Measurements are approximate. Not to scale. Illustrative purposes only.  
Made with Metropix ©2025



These particulars are believed to be accurate but they are not guaranteed and do not form a contract. Neither Jordan Fishwick nor the vendor or lessor accept any responsibility in respect of these particulars, which are not intended to be statements or representations of fact and any intending purchaser or lessee must satisfy himself by inspection or otherwise as to the correctness of each of the statements contained in these particulars. Any floorplans on this brochure are for illustrative purposes only and are not necessarily to scale.

Offices at: Chorlton, Didsbury, Disley, Hale, Glossop, Macclesfield, Manchester Deansgate, Manchester Whitworth Street, New Mills, Sale, Wilmslow and Withington

36-38 Alderley Road, Wilmslow SK91JX  
**01625 532000**

wilmslow@jordanfishwick.co.uk  
www.jordanfishwick.co.uk